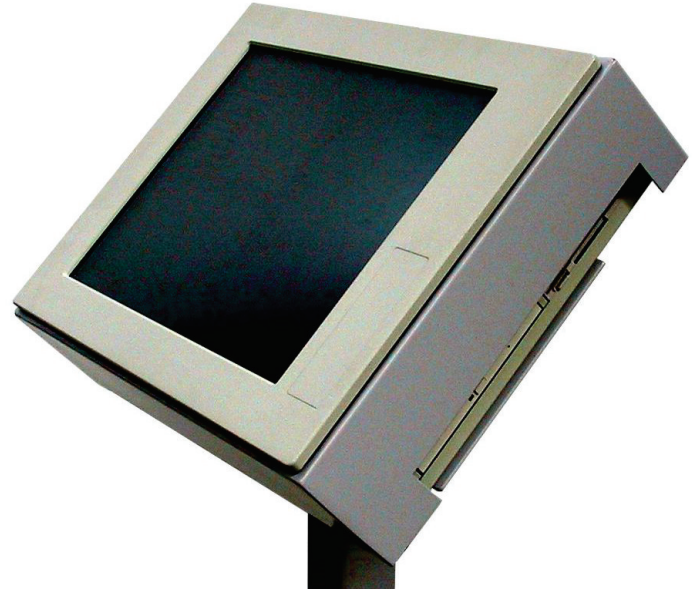


AdvanTec - Centralised Control System

Weighbatch

Material Handling & Gravimetric Control

Single Operator Interface for Complete Line Control !



Numerous Reporting and Trending Capabilities

Compatible with non Weighbatch Devices

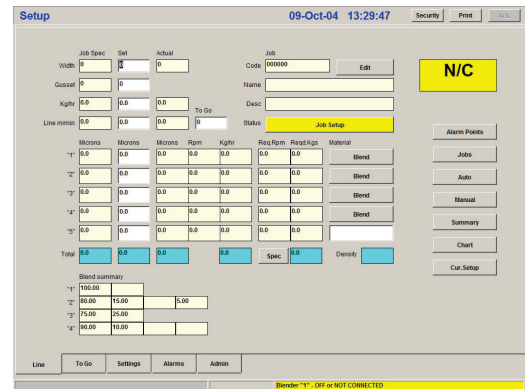
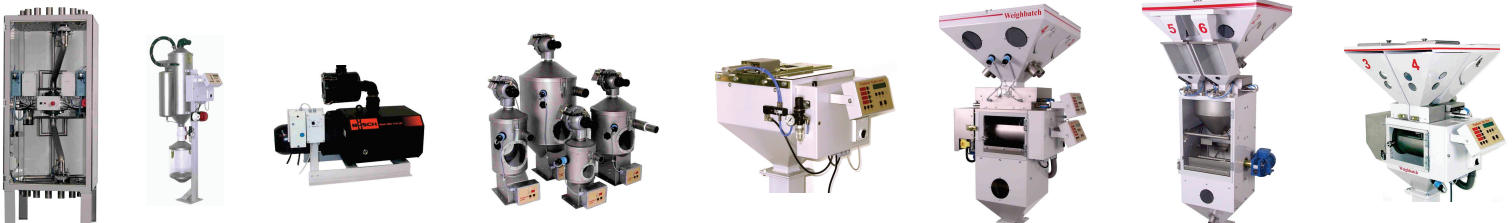


Photo: AdvanTec Monitor & Screen Shot

Features:

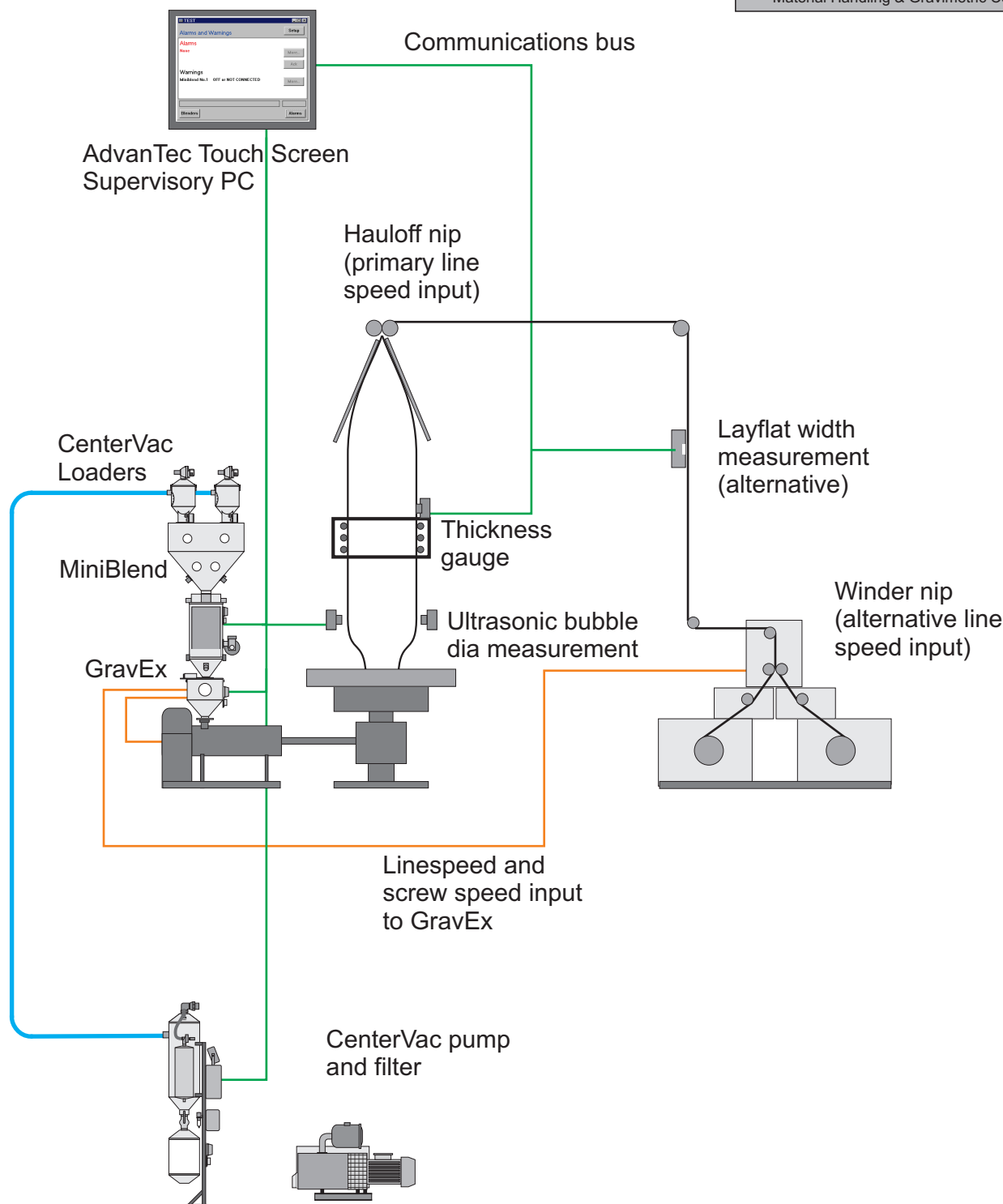
- Standard software packages for Blown Film, Cast Film, Sheet, Cable Coating, Foam, Pipe & Profile and Plant wide Material Handling and Blending
- Software is customizable for site specific process control, reporting and data logging requirements
- Provides a single operator monitoring and control interface for all devices connected to the system including material handling, blending, throughput control, width control, APC, temperature controllers, melt pressure and temperature, etc.
- Easy to use with intuitive prompts and commands. inputs via touch screen
- Historical data, recipies and setup data can be stored locally or on network file server
- Reports printed on demand or on scheduled events such as roll change, shift change, job change etc.
- Built-in DDE server allows access by other software, eg. Excel



AdvanTec Centralised Control Typical Blown Film Schematic

Weighbatch

Material Handling & Gravimetric Control



Specifications:

- Industrialised PC with 17" touch screen.
- Windows operating system.
- Recipe storage for all set points and measured variables.
- Alarm functions with adjustable tolerance limits.
- Power supply single phase 230 V 50 Hz std.
- Printer port.

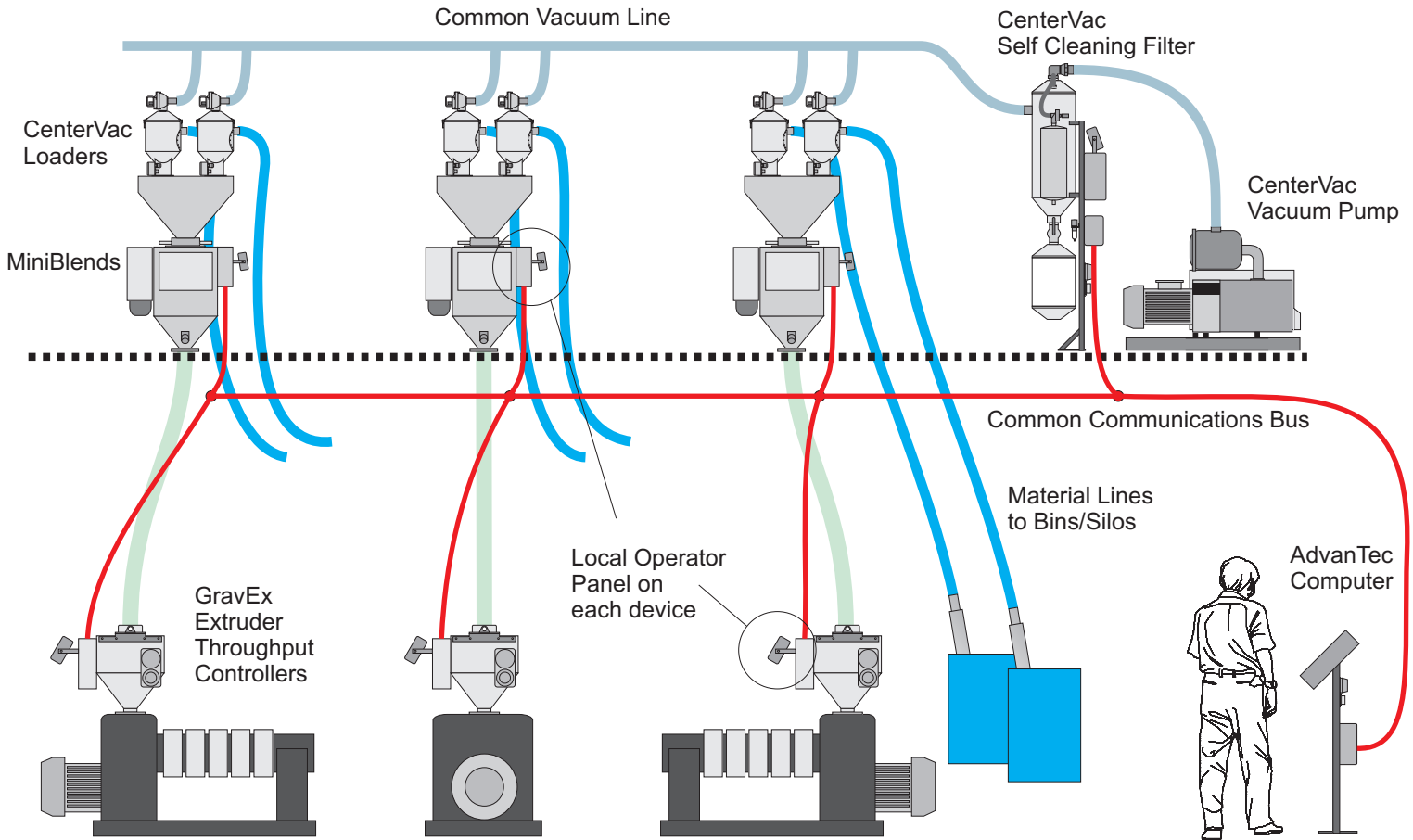
Options:

- Floor stand for free standing console, wall mounting or integrated into existing panel
- Can control single line, multiple lines, blenders, throughput control and material handling.
- Automatic Profile Control film and sheet lines
- Communication with any other device via serial interface, digital or analogue inputs.
- Custom reports and controls.

AdvanTec Centralised Control - Typical Three Extruder Co-Extrusion

Weighbatch

Material Handling & Gravimetric Control



CO-EX Current Job WBATCH 26-Sep-01, 12:58:37 PM Security Print

Job No: 14444 Product: [] Load OK

Name: TRIAL 14 Permanent [x] Cancel

Product: 1500 X 13UM Transfer to Settings

Width: 1685 Ousset: 0 Roll: 0 Trim Feed: [] Copy from Settings

Kg/hr: 140 Usage Summary

Line m/min: 58.0 Meters: 0

Microns	Material	Density		
*A 2.6	Blend	0.919	50.00	50.00
*B 5.2	Blend	0.919	50.00	50.00
*C 5.2	Blend	0.919	50.00	50.00
Total		0.919		

Est Air: 44

Blender "A" - OFF or NOT CONNECTED

CO-EX Setup WBATCH 26-Sep-01, 12:54:10 PM Security Print

Job Spec: Set: Actual: Job No: 14444 Edit

Width: 1685 1625 1685 Job Name: TRIAL 14 N/C

Ousset: 0 0 Trim Feed: [] Product: 1500 X 13UM

Kg/hr: 140.0 140.0 0.0 To Go: 0 Status: Job setup

Line m/min: 58.0 57.9 0.0

Microns	Microns	Microns	Rpm	Kg/hr	Req Rpm	Req Kg/hr	Material
*A 2.6	2.6	0.0	0.0	0.0	0.0	0.0	Blend
*B 5.2	5.2	0.0	0.0	0.0	0.0	0.0	Blend
*C 5.2	5.2	0.0	0.0	0.0	0.0	0.0	Blend
Total	13.0	13.0	0.0	0.0			Spec: 0.0 Density: 0.920

Blend summary

Microns	PB%	Material
*A 100.0		Manual Auto
*B 100.0		Manual Auto
*C 100.0		Manual Auto

Est Air: 44 Mode: Extruder Full

Line: To Go Alarms Admin

Blender "A" - OFF or NOT CONNECTED

Specifications:

- Industrialised PC with 17" touch screen.
- Windows operating system.
- Recipe storage for all set points and measured variables.
- Alarm functions with adjustable tolerance limits.
- Power supply single phase 230 V 50 Hz std.
- Printer port.

Options:

- Floor stand for free standing console, wall mounting or integrated into existing panel
- Can control single line, multiple lines, blenders, throughput control and material handling.
- Automatic Profile Control for film and sheet lines.
- Communication with any other device via serial interface, digital or analogue inputs.
- Custom reports and controls.